

Aluminium – for a long life of your roller shutter profiles

➤ Aluminium is the optimal metal for constructional products that are daily exposed to weather and that need to be light and at the same time sturdy.

➤ Aluminium is corrosion-free and the surface of our aluminium roller shutter profiles is additionally coated by a high-quality thick-layer stove enamel. Aluminium roller shutter profiles offer still further advantages:

CFC-free foaming:

✓ Advantage: silent run resonance-free torsion proof

Grooves in profile:

✓ Advantage: higher stability of profile and better optical characteristic



Absolutely colour and light fast:

✓ Advantage: no recoating colour brilliance for decades

Absolutely safe in function:

✓ Advantage: Aluminium does not expand as much as plastic in heat. The roller shutters made of aluminium can always be operated without problems.

Aluminium – front-mounted roller shutter systems by Alulux – a safe investment for the future



Varimaxx roller shutters are distinguished by their five-sided roller-shutter boxes, which are installed into the brick reveal in front of the window (or, in special cases, on top of the plaster) and fit flush against the facade.



The front-mounted **Proterma** roller shutter system consists of a self-contained, energy-efficient aluminium roller shutter box that is installed underneath the render on the façade – making it invisible from the outside.



The main roller shutter components of the three rounded front-mounted roller shutter systems **Vivendo, Partico and Formado** consist of aluminium.

Front-mounted roller shutter systems have significantly gained in importance since the introduction of the Energy Conservation Act EnEV. These roller shutter system largely prevents the transmission of sound, cold and heat between the external wall and internal space, making them highly energy efficient and soundproof.

This is because front-mounted roller shutter boxes do not require a hollow space above the window for installation, as is the case with conventional roller shutter boxes.



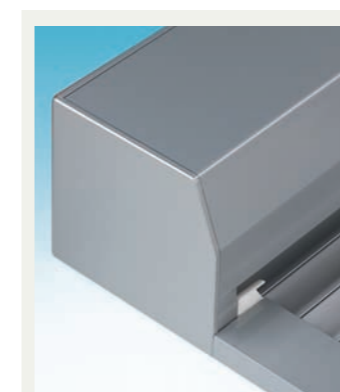
Varimaxx Aluminium roller shutter system with angular or extruded box. The most versatile of the front-mounted roller shutter systems; makes a ready fit for all architectural styles and types of facades thanks to its clean design – can be fitted either to the window brick reveal or the brickwork.



Formado Aluminium half-round roller shutter system with roll-formed or extruded box – available with a range of installation options and RAL colours for those with extruded boxes. Easily accessible from the outside.



Vivendo Aluminium roller shutter system with roll-formed or extruded box. This designer roller shutter system makes a beautiful addition to any facade and is available in a wide range of different colours to enable homeowners to customize the design of their house.



Roll formed - extruded. Alulux's sturdy range of **roll-formed** aluminium roller-shutter boxes are precision-rolled using a range of rollers and its even stronger range of **extruded** aluminium roller shutter boxes are manufactured using compression moulding.



Partico Aluminium – quarter-round roller shutter system with roll-formed shutter box. Partico shutter boxes are installed into the brick reveal and can be easily accessed for cleaning and servicing. Available in a great range of colours.

Aluminium roller shutters for new buildings

»In new buildings often roller shutters are installed, and frequently, due to lack of knowledge, these roller shutters have plastic profiles. At first glance these plastic roller shutters fulfil the basic requirements: The screening from curious views is guaranteed. A better choice is to use aluminium roller shutters; then you have the best possible weather protection during heat, rain, snow, hail and wind. The sturdier aluminium profiles offer as well an increased protection against break-in, better optical characteristics and guarantee colour brilliance for decades.«

Summary on roller shutters



There are just things that should be better made of **aluminium!**

Always make sure your roller shutters are EN 13659 compliant!

All good-quality front-mounted roller shutters must be able to withstand heavy winds and rain. However, what exactly does that mean in practical terms?

Up to now, wind load standards have been anything but uniform or transparent to end customers. Luckily, the new European standard DIN-EN 13659 has finally put an end to this.

It now specifies the quality standards that have to be met in the

manufacture and installation of roller shutters. You can tell whether or not a product complies with this standard by its CE marking (a type of "product type plate"), which is a guarantee for a high-quality and safe product. All Alulux front-mounted roller shutter components are manufactured and tested in compliance with EN 13659. The CE mark must be attached on the inside of the roller shutter box in a clearly visible position.

We, as roller shutter specialists are convinced by the quality of Alulux aluminium roller shutters. Read below, why...



Your Alulux specialist

Alulux – the **only** sensible choice when it comes to front-mounted roller shutters!



»We loved it at first sight! We all have been enthusiastic about our new home during our first visit. But before signing the contract we were sure that the first investment should be an insulation against the summer heat. So we sat together and made plans how to proceed: Shutters, roller shutters, outside blinds, Austrian blinds or Venetian blinds?

We consulted the specialist and asked him for effective and practical heat and sun protection for our house. His clear recommendation was: Aluminium front-mounted roller shutters by Alulux!

And today we know that the specialist had done a good job in consulting. Because front-mounted roller shutters do not only offer an effective protection against summer heat and improve the indoor



climate; they also stand out due to their numerous excellent features in every season:

- Screening from view
- Sun protection
- Weather protection
- Noise protection
- Insulation
- Increased protection against break in
- Heat protection from the outside to the inside
- Heat insulation from the inside to the outside
- Regulation of light conditions
- Protection against insects (option).«

Top ten convenient reasons for Aluminium roller shutters by Alulux

1. Screening from curious views.

Enjoy your privacy in your home. Roller shutters up / roller shutters down.

2. Best protection against the weather.

During rain, snow, hail, wind. The aluminium roller shutters also protect very effectively against solar radiation. The rooms remain comfortably shadowy and cool. Furniture and floor coverings are protected against bleaching. Wooden windows are shielded in an optimal way.

3. Noise insulation with closed roller shutters.

Roller shutters made of aluminium with noise-reducing and CFC-free insulating foaming reduce the noise level considerably. You sleep better, whether at night or at daytime.

4. Saving of energy.

With a front-mounted roller shutter by Alulux primary fuel consumption will be reduced in comparison to a roller shutter with a lintel box, because there is no area of heat loss between the roller shutter unit and the inside of the room. Between window and roller shutter curtain a highly insulating cushion of air is formed. The insulation value of a window with heat-insulating glass can be optimized by up to 20% with a front-mounted roller shutter.

5. Safety retrofit kit at extra charge: the (preventative) protection against burglars.

The brand name roller shutters by Alulux will pose considerable problems to hoodlums. Roller shutter systems made of aluminium are simply safer. An individual safety package with reinforced end slat, safety guide channels and an anti-push-up lock protects your home additionally. You get a factory tested system in this



safety package at a very attractive price. Ask for it at your Alulux specialist dealer.

6. Roller shutters and protection against insects all in one.

The insect screen that is integrated in the box is a reasonable addition to the roller shutter function. You don't need any components that are mounted visibly to the outside. Everything is housed neatly in the box and the screen is guided in a second track of the guide channel behind the roller shutter profiles (at extra charge).

7. Pretend to be present by means of a timer.

A programmable timer opens and closes your roller shutters at any

time you wish - also in irregular time spans. So your house looks inhabited. And burglars do not aim at your house least at all.

8. Comfortable operation with radio control!

A radio remote control for the roller shutters is the most comfortable thing you can imagine. No control leads either surface-mounted or flush-mounted are needed. This means for you: Minimal installation works without damaging the walls. With a light sensor combined with an automatic control unit the roller shutters can be - depending on incidence of light - opened or closed automatically, too.

9. Create groups of roller shutters.

By means of a group control all roller shutters can be operated automatically or with a push on a button. The groups can be changed individually any time. Even a central roller shutter operation for the whole house is possible with one hand transmitter.

10. Front-mounted roller shutters design your future at home!

When selecting the box shapes and roller shutter colours hundreds of combination possibilities are offered. Front-mounted roller shutters are a real optical contribution to the outside view of every house.

